



A.Y. McDONALD PARK

Amenities include: boat ramp, drinking water, restrooms, playground, picnic tables, fishing piers, walking/biking path

A.Y. McDonald Park is 8 acres and located off the north end of Kerper Boulevard at Hawthorne Street and Volunteer Drive.



SCHMITT ISLAND

Amenities include: boat ramp, drinking water, restrooms, playground, skate park, picnic tables, camping

Chaplain Schmitt Island is located off Highway 151/61 on Dubuque's North End. Also located on the Island are Miller Riverview Park & Campground and McAleece Park & Recreation Complex.



AMERICAN TRUST RIVER'S EDGE PLAZA

Amenities include: ramp, drinking water, restrooms

The River's Edge Plaza is located on the south end of the Mississippi Riverwalk. The Plaza also serves as a docking site for large excursion vessels. Restaurants, lodging, and entertainment venues are within a short walking distance.



www.cityofdubuque.org/watertrail



CATFISH CREEK ACCESS

Amenities include: access to 12 miles of maintained hiking trails, picnicking, and interpretive opportunities.

Located in the back waters of the Mississippi River, as part of the Mines of Spain. The 1380 acres which make up the Mines of Spain State Recreation Area were designated as one of Iowa's "Watchable Wildlife Areas." Rare species, including the bobcat, red-shouldered hawk, flying squirrel, and bald eagle have all been in the area. In addition, the area is home to a large variety of songbirds, white-tailed deer, wild turkey, and numerous small mammals. With wetlands, creeks, forests, prairies, cropland, meadows, and the Mississippi River, the Mines of Spain offers a wide variety of Iowa's natural world for those who take the time to look and listen. The park is open year-round, with park hours of 4 a.m. to 10:30 p.m.

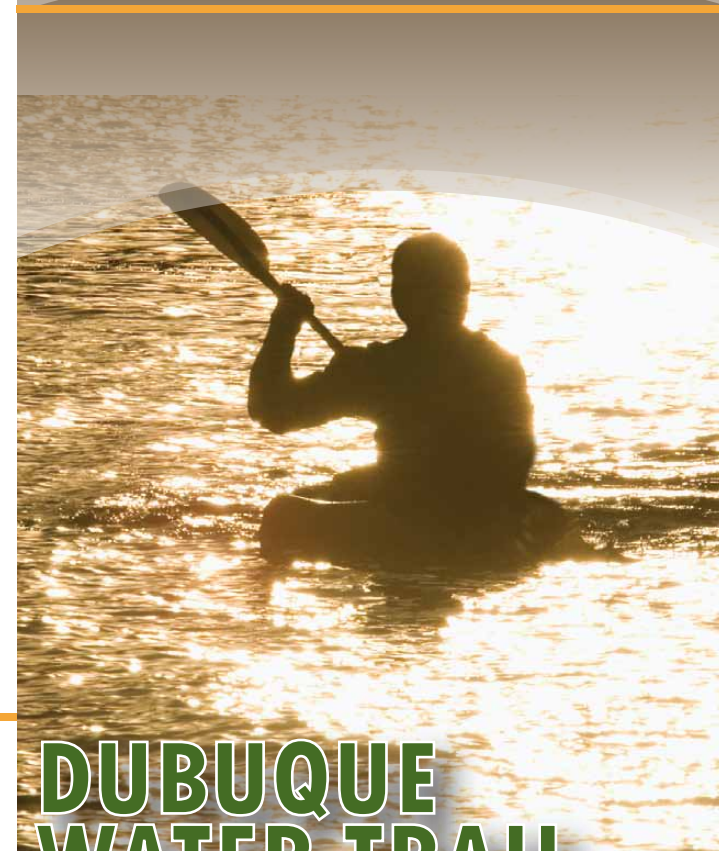
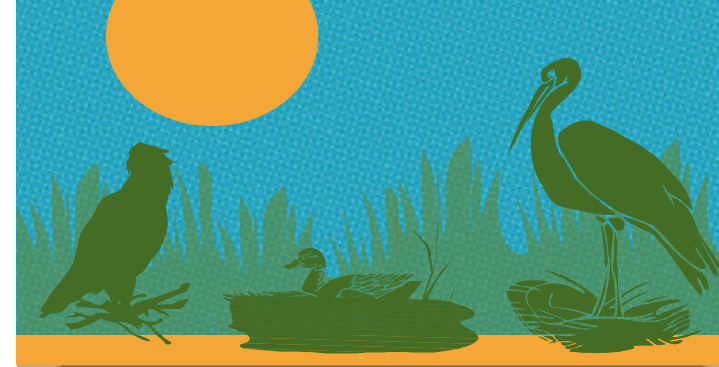


MASSEY MARINA PARK

Amenities include: boat ramp, restrooms, drinking water, camping, playground, picnic tables, concessions, bait

The concession building offers food and drinks as well as accessible restroom/shower facilities, and bait. Picnic grounds and campsites include accessible playground units. A two lane boat ramp and daytime parking for vehicles and boat trailers are located at the north side of the park. Excellent backwater paddling opportunities are in close proximity to the park. Contact: 563.556.3416.

The Dubuque Water Trail was developed through a partnership with the Iowa Department of Natural Resources, City of Dubuque, Friends of the Mines of Spain, and the Dubuque County Conservation Board.



DUBUQUE WATER TRAIL

A paddler's guide to enjoying Dubuque area waterways



W

aterways are the lifelines of America. Historically and today, Iowa's waterways have driven settlement patterns, local economies and recreational opportunities. Iowa's state-designated system of water trails connects people to the water and its resources.

Located in the Upper Mississippi River National Wildlife and Fish Refuge, the Dubuque Water Trail is 11 miles of shoreline along the western edge of the Mississippi River and Catfish Creek. Beginning south of Lock and Dam #11, the trail can be enjoyed by both the novice and experienced paddler. Whether you are paddling the shoreline of the main channel or enjoying backwater excursions, the trail is an exceptional sightseeing and recreational opportunity. It is where history, nature, commerce and recreation come together to create a interesting experience like none other.

The trail can be enjoyed in its entirety in a day, or in segments as time allows. Along the trail are five (5) access points which allow the paddler access to the river or an opportunity to exit the river and explore on-land recreational opportunities.

	A.Y. McDonald Park Boat Ramp	Schmitt Island Boat Ramp	Rivers Edge Plaza	Catfish Creek Canoe Launch	Massey Marina Boat Ramp
Water Body	Mississippi River	Mississippi River	Mississippi River	Catfish Creek	Mississippi River
Public Area	A.Y. McDonald Park	McAlece Park & Recreation Complex	Port of Dubuque	Mines of Spain	Massey Park
Access Type	Boat Ramp	Boat Ramp	Carry-down, ramp	Carry-down, natural surface	Boat Ramp
Access Owner	City of Dubuque	City of Dubuque	City of Dubuque	Iowa DNR	Dubuque County
River Mile at Access	582	581	580	578	574
Miles to Next Access	1.3	1.3	2.4	4.1	N/A
# of Parking Stalls	109	40+	175	20+	30+
Parking Area Surface	Paved	Paved	Paved	Gravel	Paved
Parking to Put-In	Adjacent	Adjacent	250 ft.	100 ft.	Adjacent
Restroom Type	Flushing	Flushing	Flushing	None	Flushing
To Drinking Water	600 ft.	600 ft.	300 ft.	None	500 ft.
Experience Type	Recreational	Recreational	Recreational	Recreational	Recreational

SAFETY FIRST!

Remember to ALWAYS wear a life jacket and be aware of power boat and barge traffic on the Mississippi River.

HELPFUL TIPS:

- Be aware that wind and power boats can create waves causing paddling difficulty.
- Do not litter or dump waste into the river.

